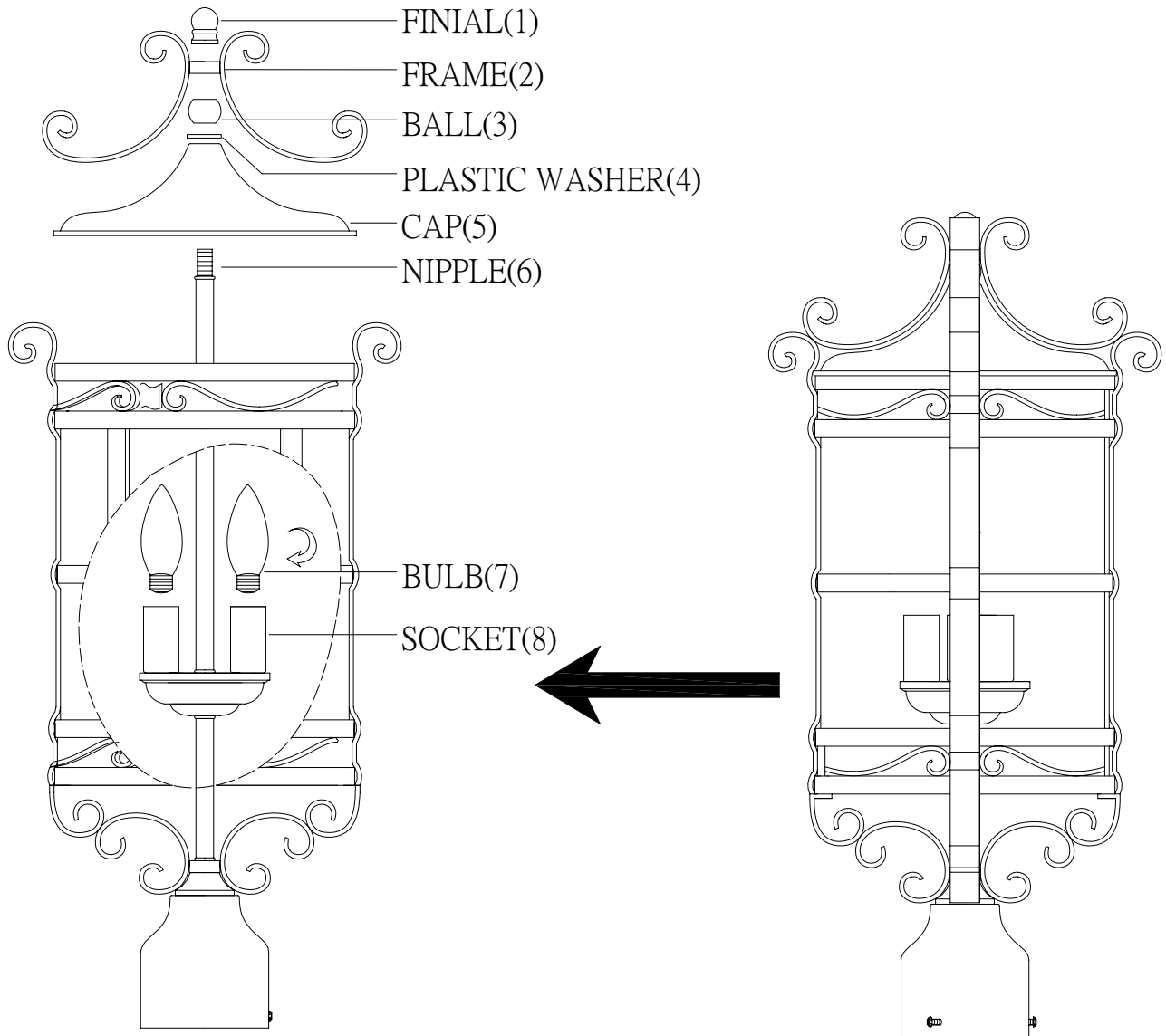




Assembly Instructions

ITEM NO: 75305-10

75306-10



1. Carefully remove the fixture out of the carton, and check that all the parts are included referring to the above illustration. Make sure not to misplace any parts that are needed for the installation;
2. Install the bulb(7) onto socket(8), then slide the cap(5), plastic washer(4), ball(3), frame(2) onto nipple(6) onto nipple(6), and secure them finial(1);
3. The fixture is assembled!